



A longitudinal study of tumour of the parotid gland

A single centre experience on recurrence and survival

L. Cederblad, MD¹, N. Laytragoon-Lewin, PhD², G. Enblad, MD, PhD¹, S. Johansson MD, PhD³, E. Blomquist, MD, PhD¹

¹ Dept of Oncology, and ² Rudbeck Laboratory, University Hospital Uppsala, Sweden,

³ Dept of Oncology University Hospital Umea, Sweden

Conclusion

A 56 year study period does not show any significant change in treatment practise for cancer of the parotid gland. There has not been improvement in treatment outcome. The 5-year survival is still approximately 42% and most patients pass through surgery and radiotherapy.

Introduction

In an retrospective study from the time period 1948-2004, 144 patients were diagnosed with cancer of the parotid gland at the Department of Oncology at the University Hospital of Uppsala, Sweden.

Material and Method

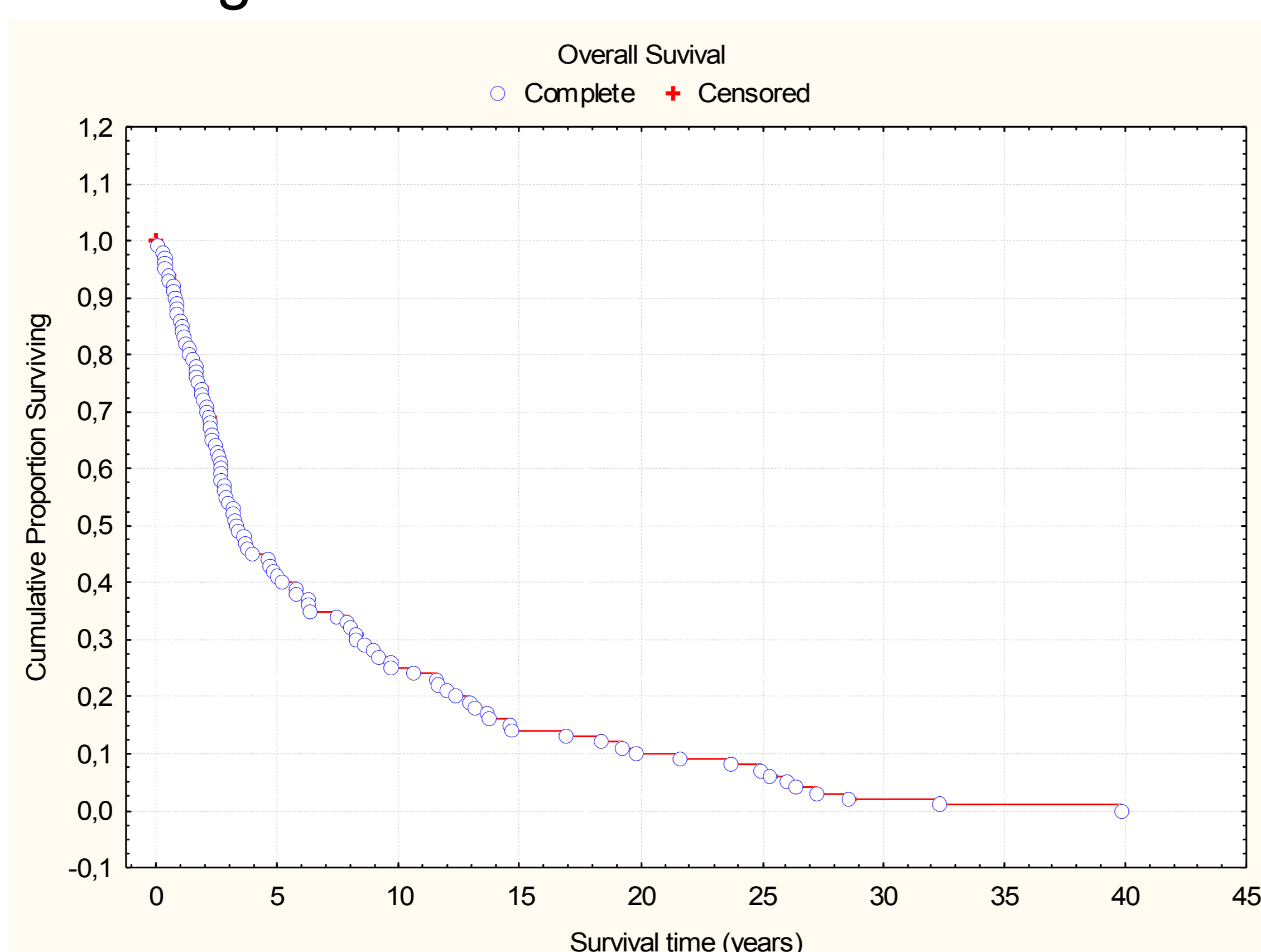
In the study we included 144 patients, 74 male and 70 female. The patient characteristics were shown in table 1.

Table 1.

Gender, male/female	Age range (years)	Surgery (+Radio-therapy)	Primary Radio-therapy	No treatment
74/70	16-87	112(81)	25	7

The time from diagnosis to last follow-up for living patients was between 2 years and 40.6 years (median 8.3 years, mean 9.8 years). The time for survival varied from 19 days from 40.6 years (Figure 1).

Figure



Results

- The total overall 5-year survival was 42% in our material.
- One-hundred and four patients (72 %) patients had died. Twelve (8%) were lost to follow-up.
- At the end of study (1 February 2006) 28 patients (19%) were alive.
- Thirty-eight (26 %) patients died from cancer of the parotid gland, 4(3%) died of other cancers, 10 (7%) died from cardiovascular or pulmonary disease and the remaining 52 (36 %) patients died of other causes which were not stated in the medical charts.
- Of treated patients 9 (6%) progressed locally or with distant metastasis. Relapse was reported in 57 (40 %) patients,
- Younger patients (<65 years) had a better prognosis (p=0.00856) (Figure 2).

Figure

