

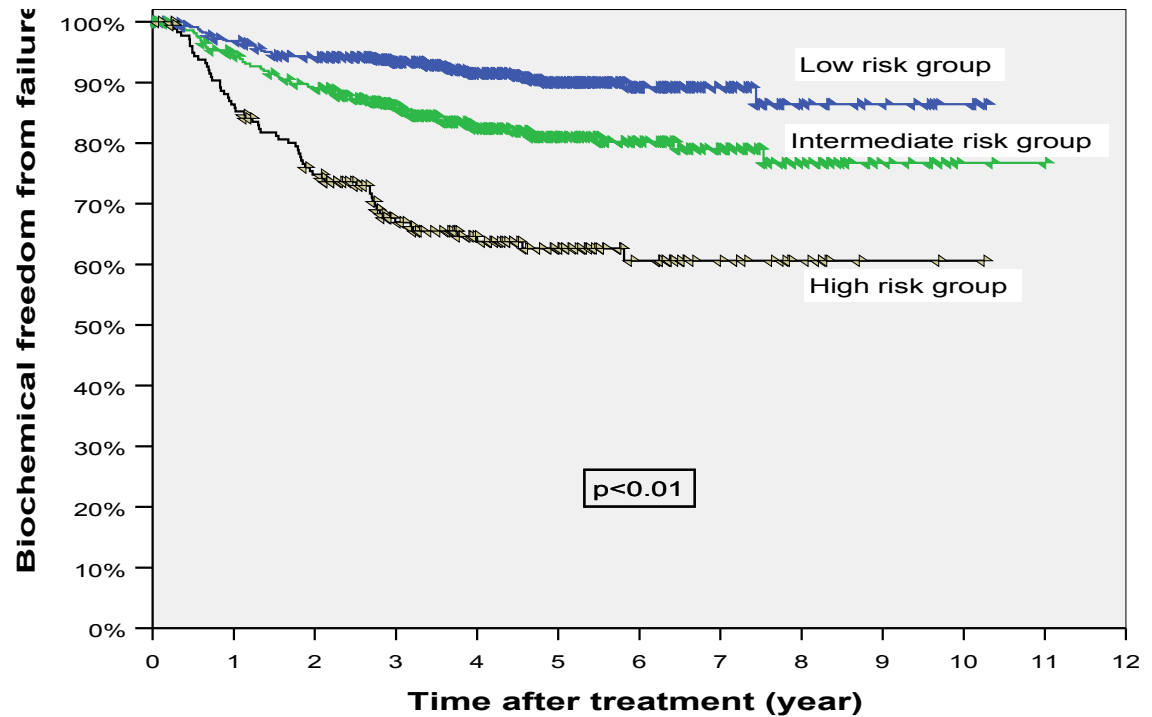
Overall outcomes

Total number of patients	1298
ASTRO Biochemical relapse	192 (15%)
Clinical Relapse	74 (6%)
Prostate Cancer Deaths	21 (2%)
Deaths from other causes	34 (3%)
Lost to follow up	78 (6%)

PSA-RFS by Risk Group

10 yr PSA-RFS:

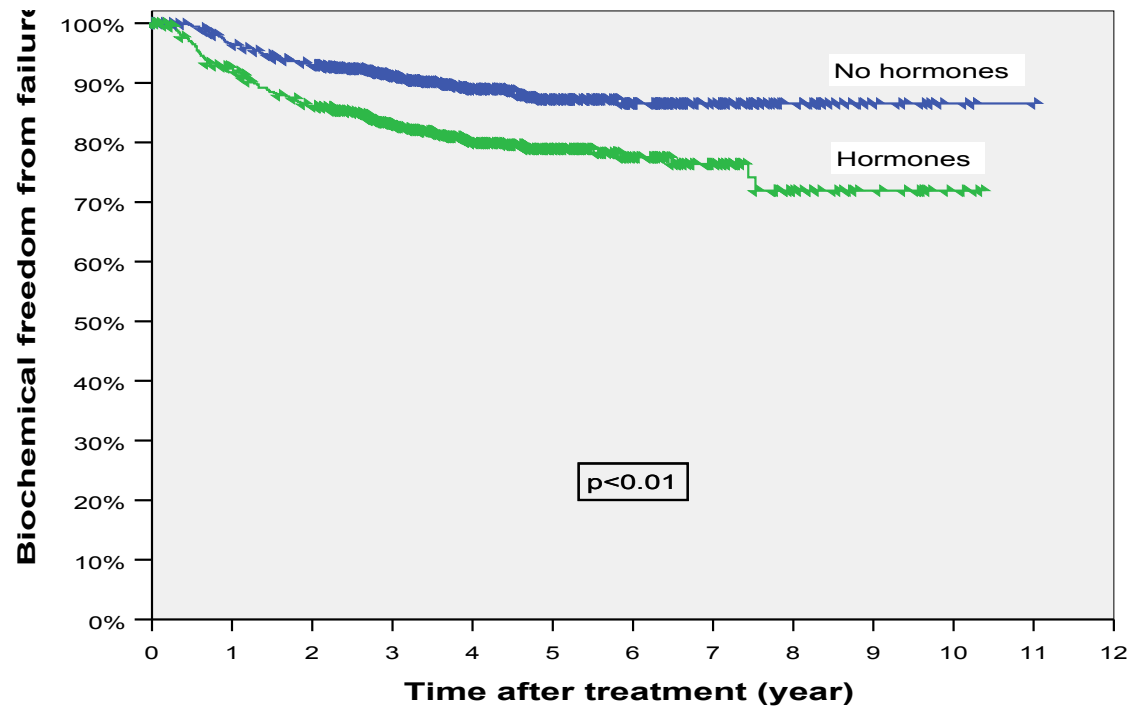
Low	86%
Intermed	77%
High	61%



P < 0.01

PSA-RFS and initial hormones

10 yr PSA-RFS:
No hormones
86%
Hormones
72%



P < 0.01